

# FT-074 LED

1 functional LED lamp- low power consumption  
European homologation E9 mark  
ElectroMagnetic Compatibility – EMC certificate  
Shockproof lamp  
The lamp connection polarity is optional  
Easy assembling lamp  
Unique light emission

*Can be mounted on the vehicle piping using an additional rubber,  
included in the set – **NEW in the offer!***

## Lamp Functions:

Depending on the color of the light:

- front position „A – approval after 360 rotation
- rear position „R1 – approval after 360 rotation
- side marker „SM1 – approval after 360 rotation
- decorative light (blue and green)

## Lamp parameters:

- supply voltage range: 12-36V DC
- working temperature: -40°C do +55°C
- lamp resistant to hard weather conditions
- lamp is fully airtight

## Power consumption:

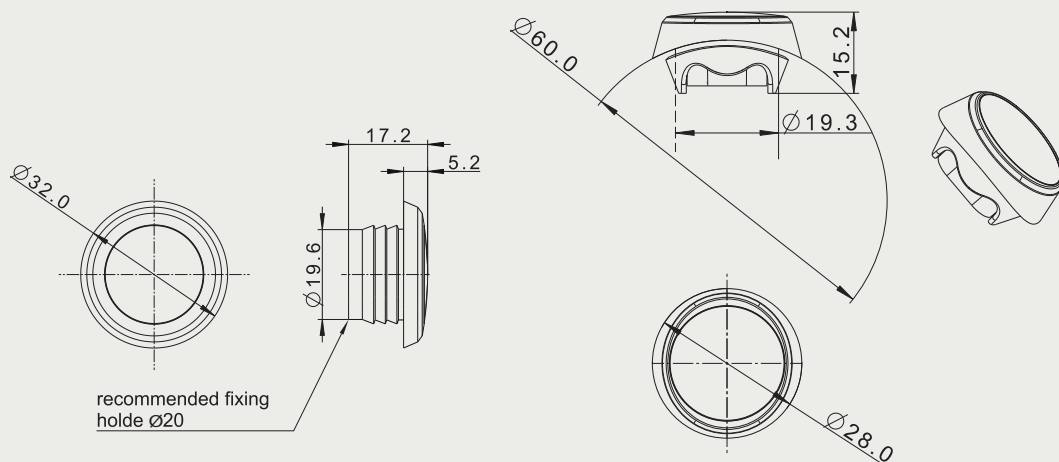
- 12V/24V = 0,03A/0,03A

## Power consumption (rated power):

- 12V/24V = 0,4W/0,8W

## SET CONTAINS:

- side marker lamp
- rubber for flat fitting
- rubber for fitting on tubular bars



*... all you need is light*

Delta Distributors AE Limited

+44 (0) 28 3026 7555

sales@deltadistributors.co.uk

www.deltadistributors.co.uk